

# Council of Tramway Museums of Australasia Inc.

[www.cotma.org.au](http://www.cotma.org.au)

## News Update

### June 2022



Australia's newest tram depot

Photo: Mal Rowe

**UPDATE IS FOR ALL OF YOUR MEMBERS.  
PLEASE FORWARD IT TO ALL ON YOUR E-MAIL LISTS**

### Words from the President

Earlier this month I attended the FRONZ (Federation of Rail Organisations of New Zealand ) Annual Conference held in Invercargill, which is at the very bottom of the South Island. My role in this organisation is the Tramway Co-ordinator encompassing all of the Tramway organisations in NZ.

This role meshes very well into my position of President of COTMA as it ensures that all Tramway groups on both sides of the Tasman can have awareness and hopefully uniformity of understanding of the myriad of rules and regulations that apply to our profession. The requirement of having to undergo scrutiny by Regulators can lead to some contentious issues arising at times and hopefully a shared overview between COTMA and FRONZ raises our profile and means that we can speak for, and be consulted on, our industry and represent all of our members interests.

Now that the vagaries of COVID are hopefully receding into a distant memory, it will be a welcome relief to member groups that they can resume normal activities without restrictions and get back to what we enjoy most with our respective Tramway. With this in mind it is pleasing to be able to note in various newsletters, the progress being achieved with new buildings, new track work, restoration of tramcars and especially the movement of trams between member groups.

On behalf of the COTMA Executive I wish all of you well in our shared Tramway interests and hope that you continue to prosper in our chosen hobby.

Henry Brittain, President

### Former COTMA President awarded Queens Service Medal

Dave Hinman has been recognized for services to tramways and heritage with the award of the Queen's Service Medal. COTMA members will know that it is well deserved and we offer our warm congratulations to Dave – and his proud family.

Dave was instrumental in the planning and construction of the City Tourist Tramway in Christchurch.

He was instrumental in working with Christchurch Council and Christchurch Tramway Limited to reopen the tracks in 2013, following their destruction due to the 2011 earthquake.

Dave has been a Trustee of the Ferrymead Trust, having played a key role in the planning and development of the Ferrymead museum complex.

He recently retired as Secretary of the Tramway Historical Society (THS), having held positions on the Management Committee since 1966.

Dave is an active member of the COTMA committee in his role as immediate past president.



Dave was presented with the medal by Her Excellency The Governor General of New Zealand, The Rt Hon Dame Cindy Kiro, GNZM, QSO at a ceremony on 10<sup>th</sup> of May 2022.

## Volunteer Awards

COTMA committee has reviewed our process for volunteer awards. The outcome to date is that we will update the process including asking for details of the reason for the award. The decision to make this award will remain with the local group. The aim is to have more information about the reasons behind so that they can be appropriately described at Conference General Meetings.

## COTMA conference

The next COTMA conference will be in Auckland in 2023 – probably in early October. Watch the website for details. <https://www.cotma.org.au/conference.html>

## Safety Manager Group

One of the most challenging issues for many members is to keep up to date with safety procedures and documents. While the actual procedures will vary greatly between museums due to their own circumstances and the differing regulations in NZ and AU, there is no sense in 're-inventing the wheel'.

The COTMA committee is considering re-establishing a 'safety group' which could be no more than an email address list - or more if the members want. So far we have established the relevant email contact for most operating Members, along with those who are responsible for small items or archives in each organisation. The Committee will work out shortly the best way to advise our Members of these lists.

## Archer Park turns 30

The Archer Park Rail Museum is celebrating 30 years in October – they are very keen to make contact with former members to join in the celebrations and memories.



Railway Group Reaches 30 Year Mark

Past Members? Where Are You?







Our railway group will be 30 years old this year!  
What was your journey with the Archer Park Rail Group?  
*Capricorn Historical Steam Train Association?*  
*Capricorn Heritage Railway Association?*  
*Friends of Archer Park Station & Steam Tram Museum Inc.?*

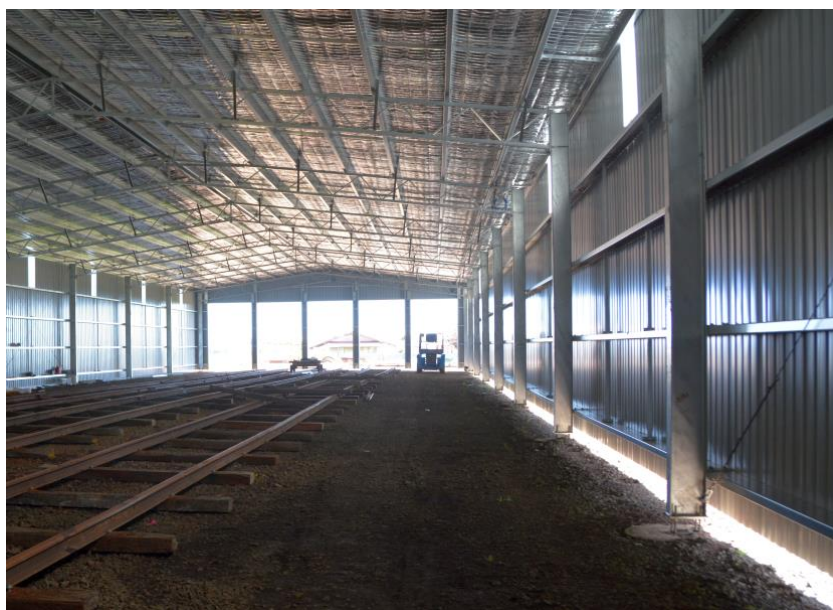
*Do you have any old photos?*  
*Let us know your story?*

*We will celebrate on Thursday 20<sup>th</sup> October 2022*  
*Please call us on 49222774*  
*Email: [archerpark@bigpond.com](mailto:archerpark@bigpond.com)*  
*Or Facebook message*

## Ballarat's newest depot

The display depot mentioned in the last COTMA News Update is not actually Ballarat's newest depot!

Their newest depot is a 5 road, 30 tram capacity carshed at Ballarat Tramway Museum's Bungaree site. It was erected with funding from VicTrack with project management by Ballarat Tramway Museum and will house W class trams being retained for future heritage purposes by VicTrack, heritage trams allocated to the Melbourne Tram Museum but not able to fit into Hawthorn Depot and trams owned by Ballarat Tram Museum and not currently needed on the Gardens track.



The depot at Bungaree is huge. It looms large on the road in – see the cover photo of this edition of Update.

Photo: Mal Rowe

### ... and a 'new' traverser

When Preston Workshops was redeveloped one of the old traversers (dating from the mid 1980s) was set aside for use in a heritage environment. It has now been moved to Bungaree and will give connect the 5 roads there with a loading ramp to enable moving trams in and out of the Bungaree storage without the need for cranes.



The traverser after delivery to Bungaree – Photo: Paul Mong

### Parts Management

Trucks continue to become available from Newport as trams are sent to their new owners.

- Two pairs of trucks are due to leave soon for Christchurch where they will be used to provide parts for 'new' heritage trucks and to provide a new truck for 'The Beast' – THS's works tram which will give up it's MMTB No 9 trucks to enable more 'new' heritage trucks to be manufactured.
- Two pairs will go to Bendigo – who will release 4 GE 247AX motors from their stock for use in Wellington.
- One pair will go to Ballarat.
- One pair will go to Perth.

The trucks will be transferred to Bungaree initially under an arrangement negotiated BY Ballarat Tramway Museum with the carriers who will be moving trams from Newport into the new storage depot at Bungaree.

Bendigo Tramways have generously offered 4 BTH 265 motors to COTMA for re-use. They will be transferred to Bungaree and added to the COTMA stock.

### Who are your prized suppliers of parts and services?

It is often hard to find people or companies that can provide specialist services, including manufacture of heritage parts. Some member museums have found contractors who they prize and call on regularly. It is planned to run a session on this topic at the next Conference, but if you would like to share you prized supplier list with others then we would be happy to share the information now. This is one way you can reward them for their services – by referring them for more work.

Did your museum fail to get a mention?

Museum News in COTMA News update is always of interest.

If you have something to tell us, then we would be delighted to hear at [cotma@cotma.org.au](mailto:cotma@cotma.org.au)

... and remember:

UPDATE IS FOR ALL OF YOUR MEMBERS.  
PLEASE FORWARD IT TO ALL ON YOUR E-MAIL LISTS

Got 600,000  
Lego blocks  
to spare?

Here's what  
you could  
build.



This Lego model at Melbourne Central shopping centre is big enough to step inside. Photo: Mal Rowe