

A CABLE CAR PROJECT FOR DUNEDIN

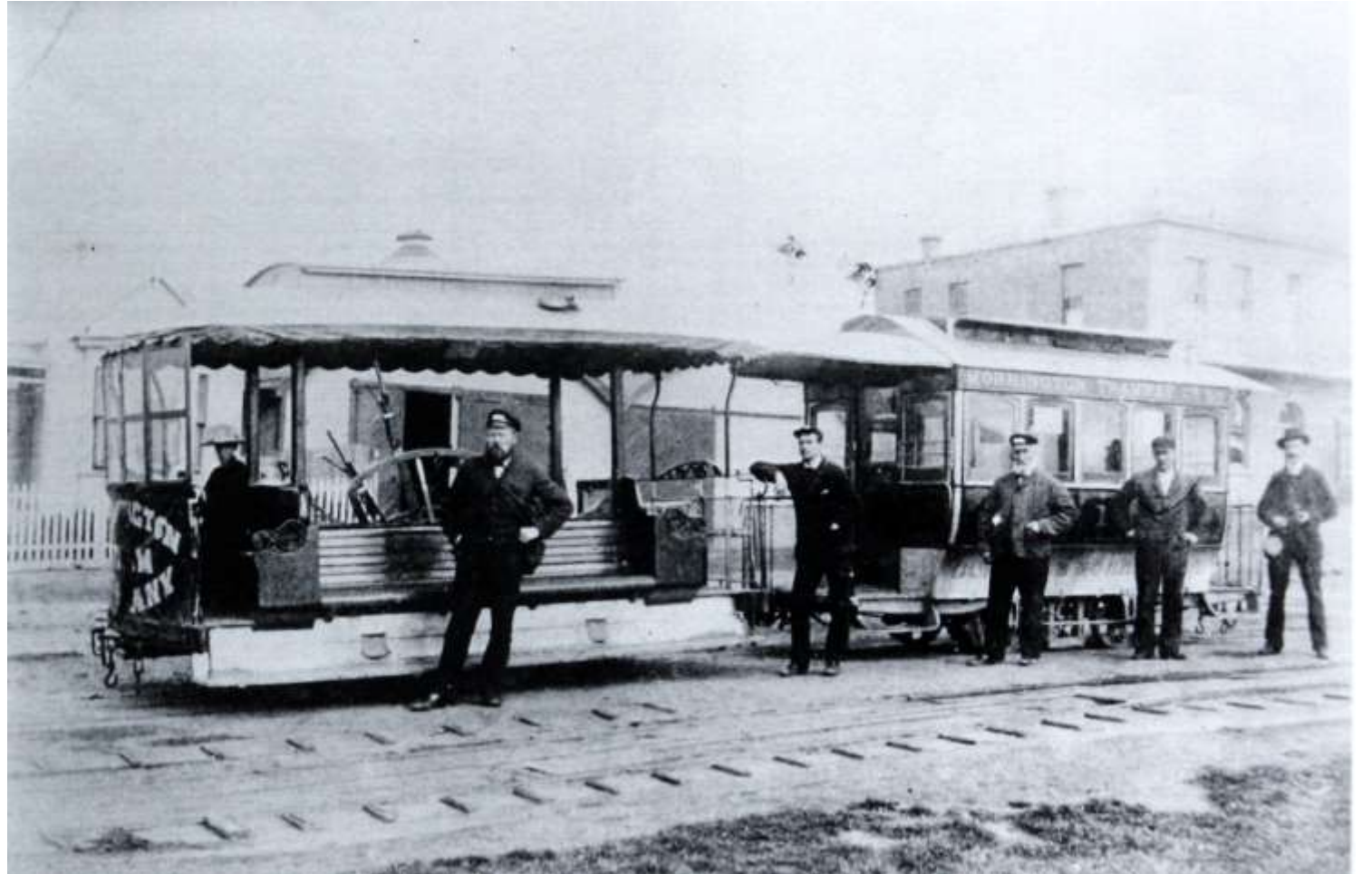
THE FIRST STEP IN RESTORING THE
MORNINGTON CABLE CAR LINE



STAGE 1

The construction of a Totalspan barn to act as a Museum which will display several Tramway Historical Society cable car vehicles at the head of the original Mornington line in Dunedin.

This is now underway.



This historic shot of the original Mornington line where the barn is to be built shows an original grip car and trailer c. 1886.



A fire in 1900 destroyed the original fleet apart from one trailer of which the body is now at MOTAT. Trailers were converted from horse trams and a new fleet of six grip cars were built to keep the line open.



The Tramway Historical Society found this converted horse tram near Dunedin in use as a sleep out. It awaits restoration...



... and is shown here at the Mornington terminus in 1950's in my painting





The pleasures of the Mornington line are shown here as a grip car and a later 1920 trailer climb the gradient up Dunedin's High St past a typical grand mansion, reminiscent of those beside San Francisco's lines.



Trailer 111, also a 1920 build, after restoration at T.H.S.

It is ready to go to the Dunedin Cable Car Museum stage 1. Grip Car 103 is now underway.



Once 103 has been restored to runnable condition it will go to Dunedin as well. In the meantime a grip car from the Roslyn line No.95, restored to static display, will be transferred there from the Hall of Wheels, Ferrymead.





No. 95 displays a set of reconstructed grip man's levers and a gripper. With further work it could possibly be made to run again.



The Dunedin Heritage Light Rail and Cable Car Group also wish to display a partially (and badly) restored sister car of Roslyn 95, Roslyn 97.

Here it is in transit having been saved from destruction in a transport Museum in Wanaka.



Mornington Cable car No.103 last year was brought into Tram Barn 1 for full photographic recording and then the chassis was separated from the body. Later all body components have been further stripped and analysed for what can be saved and what restored. A full Conservation Plan is being followed.

The chassis of 103 seen above has recently had many main members replaced and new components scarfed in. Axle boxes saved from Mornington 104 (destroyed by vandals) have been reconditioned and many other components await that now.



**FOR THOSE INTERESTED
A FEW REMAINING COPIES OF:**

**Don Mc Ara's
“HOLD VERY TIGHT PLEASE”
(Dunedin's street running cable cars)**

ARE STILL LEFT AND ARE BEING SOLD TO RAISE FUNDS FOR
103's RESTORATION. (\$80/COPY)

Graham Stewart, Publisher

